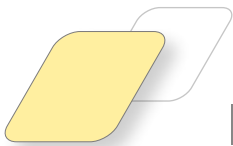




SAUTER moduWeb Vision

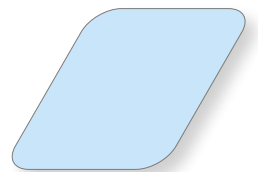
All installations at a glance:
visualising, analysing, operating.



I want to see the whole picture. **moduWeb Vision** gives me full access to the installation.

From the tried and tested system family.

SAUTER moduWeb Vision belongs to the SAUTER EY-modulo system family. Thanks to a consistent look and feel and the same configuration and operating philosophy, moduWeb Vision fits seamlessly into the range of SAUTER visualisation solutions, from the embedded SAUTER moduWeb to the higher-level SAUTER Vision Center building management system.



Convenient and clear.

Do you want to control the building technology at your premises from the comfort of your office? Or check what the problem is when you receive a malfunction report via SMS while you're out and about? No problem! All you need is moduWeb Vision from SAUTER and a computer with internet access.



Versatile and easy to operate.

moduWeb Vision makes it easy to operate building automation systems. Using this compact, web-based visualisation solution, which is also available with the option of being fully touch-optimised, you can operate your systems from anywhere.

Its performance, stability and user-friendliness make moduWeb Vision a cost-effective, uncomplicated solution. Particularly in small and medium-sized facilities, such as schools and branch-based operations like banks, hotels or supermarkets, moduWeb Vision reduces your operating expenses.



Regardless of what **happens**, moduWeb Vision puts you in complete control.

SAUTER moduWeb Vision is an integrated system distinguished by its interoperability and system openness. You operate and monitor all HVAC systems from a web or touch client, so it couldn't be easier.

SAUTER moduWeb Vision.

SAUTER moduWeb Vision is a web server that communicates with the automation stations via BACnet/IP. Visualization is possible with any HTML5 compatible web browser.

Open communication.

BACnet/IP is the standard protocol used by moduWeb Vision and SAUTER EY-modulo 5. This open communication protocol enables the seamless integration of all trades and devices.

Commissioning.

SAUTER moduWeb Vision can be installed quickly, easily and without special system requirements. For commissioning, control parameters and switching programmes can be set and optimised during ongoing operation, either on site or via remote access.

Operation.

Access is via user administration, with a user name and a personal password. Predefined user roles can be supplemented with individual approvals. Because operation is intuitive, even inexperienced users can quickly find their way around, as moduWeb Vision makes control easy – even for complex installations.

Visualisation.

SAUTER moduWeb Vision displays your automation stations dynamically in the form of a structured list or graphics. Interactive presentations and animated schematics make all information visible at a glance. They allow you to identify any weaknesses quickly and resolve them. This data transparency makes a major contribution to sustainable energy efficiency.

Monitoring.

SAUTER moduWeb Vision monitors the installation for you and informs you of any incidents by e-mail or text message. Error messages are displayed immediately in the system view. Extensive recording options are available for data analysis.



Easy to operate from anywhere with the touch of a finger. **SAUTER moduWeb Vision Touch.**

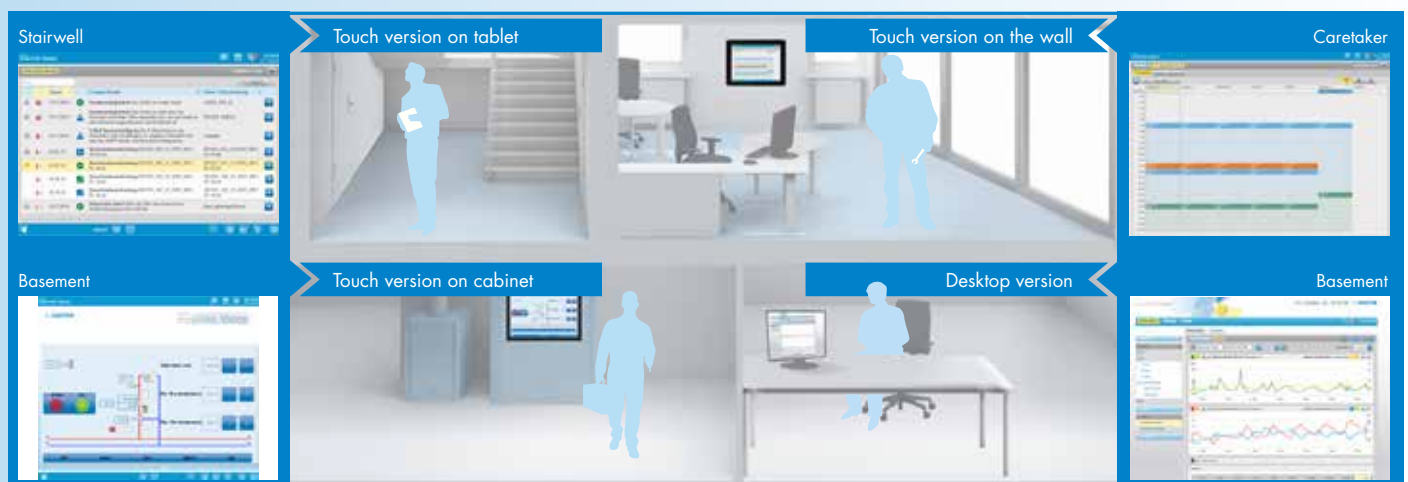
Everything at your fingertips.

The SAUTER Facility Touch Client turns any touch screen into an access point to your building management system. You can comfortably manage the tables, alarm lists, reports or calendars in moduWeb Vision using the touch interface.

Use moduWeb Vision on the touch client on the cabinet monitor at the installation itself or conveniently from the caretaker's office. Everything is possible.

Intuitive operation.

SAUTER moduWeb Vision is your professional plant visualisation for small to medium sized applications. Every method for using this provides you with consistent user interfaces, navigation focussed on the user and the most up-to-date, ergonomic interface design.





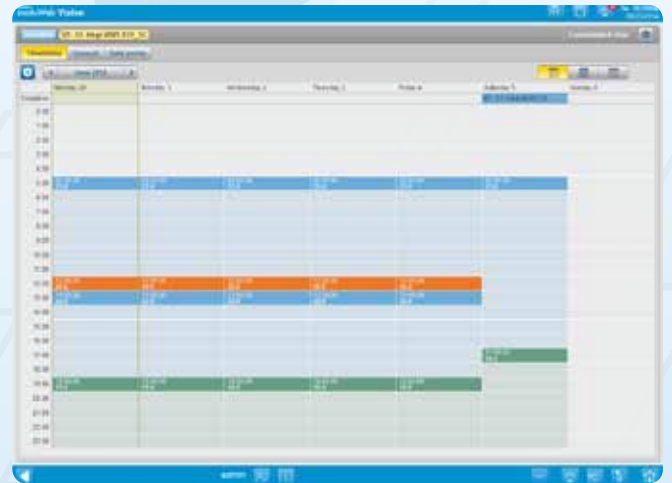
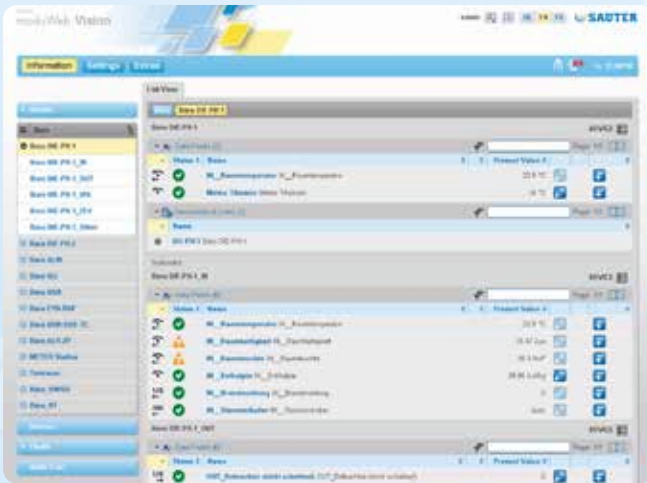
Flexible location and view.

With the moduWeb Vision web server, you can use multiple touch clients and thus assign different screen settings. This enables you, for example, to define different views for the various equipment systems such as heating or ventilation. It is up to you when, where and how you use the flexible, versatile and intuitively operable visualisation software from SAUTER. You can implement this using a web browser, Touch Client or while on the move using a tablet.



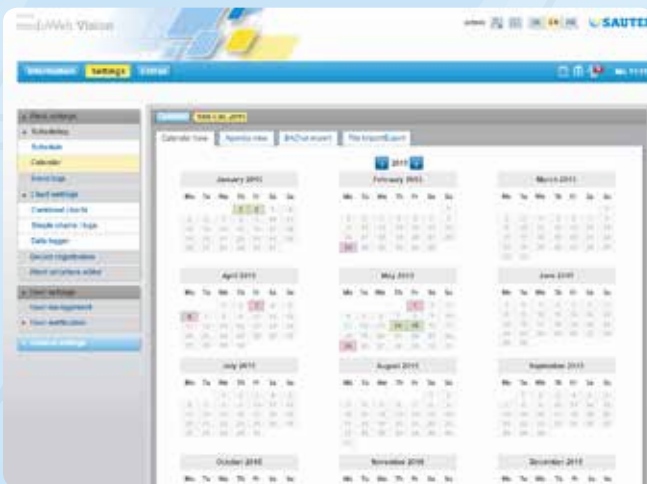
moduWeb Vision Desktop

moduWeb Vision Touch



List view

Switching programme

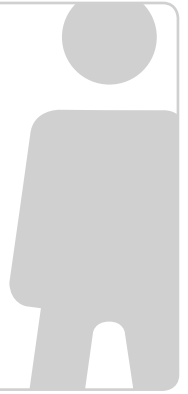


Graphical calendar: Special days

Chart

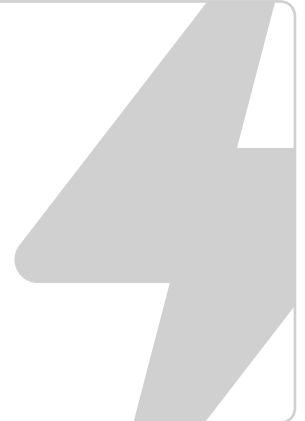
Focus on the user

- Navigation, page structure and symbol language according to the latest developments in interface design.
- Inexperienced users appreciate the intuitive, graphics-orientated operation:
 - Navigation and presentation using dynamic plant schematics
 - Parameterisation of time programmes in the agenda view
 - Protection from unintended changes to the installation
- For experienced users, the focus is on performance:
 - Easily hierarchical navigation through the plant tree
 - Comprehensive information in structured lists
 - Access to parametrisation functions



Notification

- The alarms are automatically sent to the defined recipients, depending on the plant component, equipment system and priority.
- User-specific alarm notification by e-mail or SMS using SMTP service.
- SMS messages are sent via UMS service on the internet without any additional hardware.
- moduWeb Vision monitors both the connected devices and itself: System malfunctions are also sent by e-mail and SMS message.
- Display of alarms:
 - As an icon in the schematics and the data point lists
 - In two alarm lists (current and historical alarms)
 - As a pop-up message



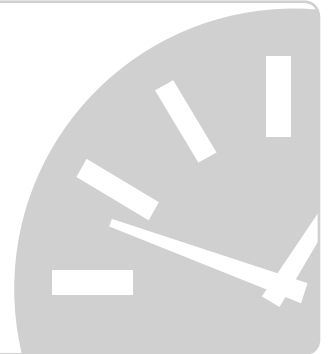
Charting

- The dynamic tables and animated diagrams supply all the information you need to optimise your installation.
- moduWeb Vision shows the historical data of multiple data points clearly arranged.
- The historical data can be exported for further processing with Excel and other programs.
- Up to 32 GB of historical data can be saved.



Time programmes

- moduWeb Vision offers an attractive user interface for the time programmes of the connected stations. The instructions are carried out locally in the relevant automation station.
- The graphical presentation of the time programmes and special day calendars makes them less intimidating for inexperienced users, which helps to prevent errors.
- Summary of the weekly programme and special day programmes in a shared view.
- The wizards and the export and copy functions increase productivity in routine tasks and minimise the potential for errors.
- moduWeb Vision is a complete BACnet schedule client.



Security

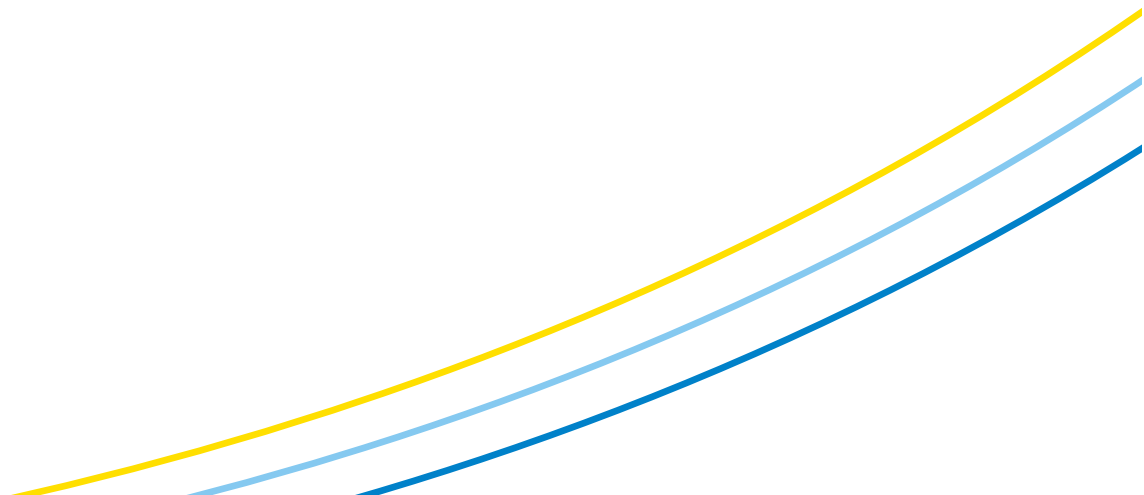
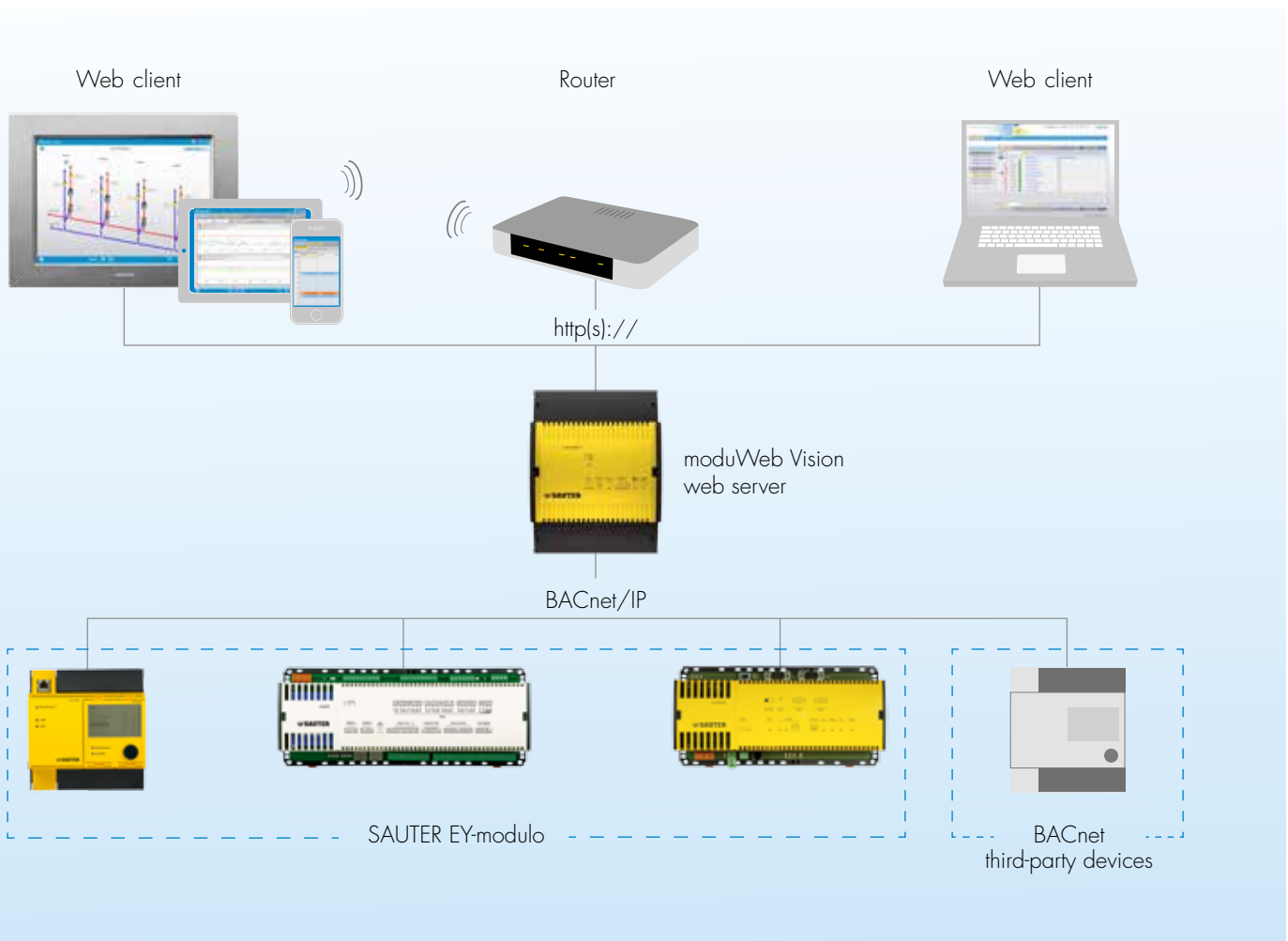
- Password-protected access prevents unauthorised access.
- Access to plant components and equipment systems can be configured for each user.
- User activities are logged, enabling traceability.
- Automatic back-up of the configuration and historical data to a USB stick.
- Secure communication with encrypted https:// supported
- Integrated firewall provides additional protection against intruders.



Complete access to the entire installation.

Using BACnet/IP, SAUTER moduWeb Vision consolidates all data of all the connected stations from the SAUTER EY-modulo system family and from third-party providers. Any WLAN router allows you to use the standard web browsers to access the moduWeb Vision web server in order to display structured lists and clear graphics for the installation.

For touch panels and mobile devices such as tablets or smartphones, SAUTER moduWeb Vision provides optional touch-optimised operation and freely definable views.





At a glance.

Its advantages.

- ✓ A modern embedded web server with standard HTML5 for visualisation
- ✓ Embedded web server
- ✓ Multiple clients (with dedicated visualisations), usable simultaneously, at different locations and with exclusive content
- ✓ User-specific alarm forwarding
- ✓ Extended range of functions
- ✓ Facility Touch Client software (optional)
- ✓ Compact solution based on microcontrollers
- ✓ Scalable BACnet/IP web server solution
- ✓ Integrated user administration and HTTPS support
- ✓ Initial solution of the SAUTER visualisation and building management family

How you benefit.

- Dynamic diagrams, alarm lists, calendars and schedules, on any (mobile) device.
- No labour required for software installation and system maintenance
- To be simultaneously operated on a PC, with touch operation on the cabinet, and remotely from your tablet
- Enhanced system availability thanks to timely notification of events via email and SMS
- Freely definable views
- Optimised touch operation with kiosk/full screen mode in any browser
- Inexpensive solution, low operating costs
- moduWeb Vision can be integrated in a larger building management system and is the central point for automation and field devices of all subsystems
- Secure access to your installation via login and password
- Homogeneous concept for optimised, intuitive operation and uniform engineering for the entire solution family.



Systems

Components

Services

Facility Management

P100014108 - V1

www.sauter-controls.com

Subject to change. © 2015 Fr. Sauter AG

 **SAUTER**
Creating Sustainable Environments.